

My wife and I live year round on MT HWY 87 next to:

**Polygon Number: HENRYS\_39. I just want to express my earnest request that HENRYS\_39 be designated a permanent wilderness area.**

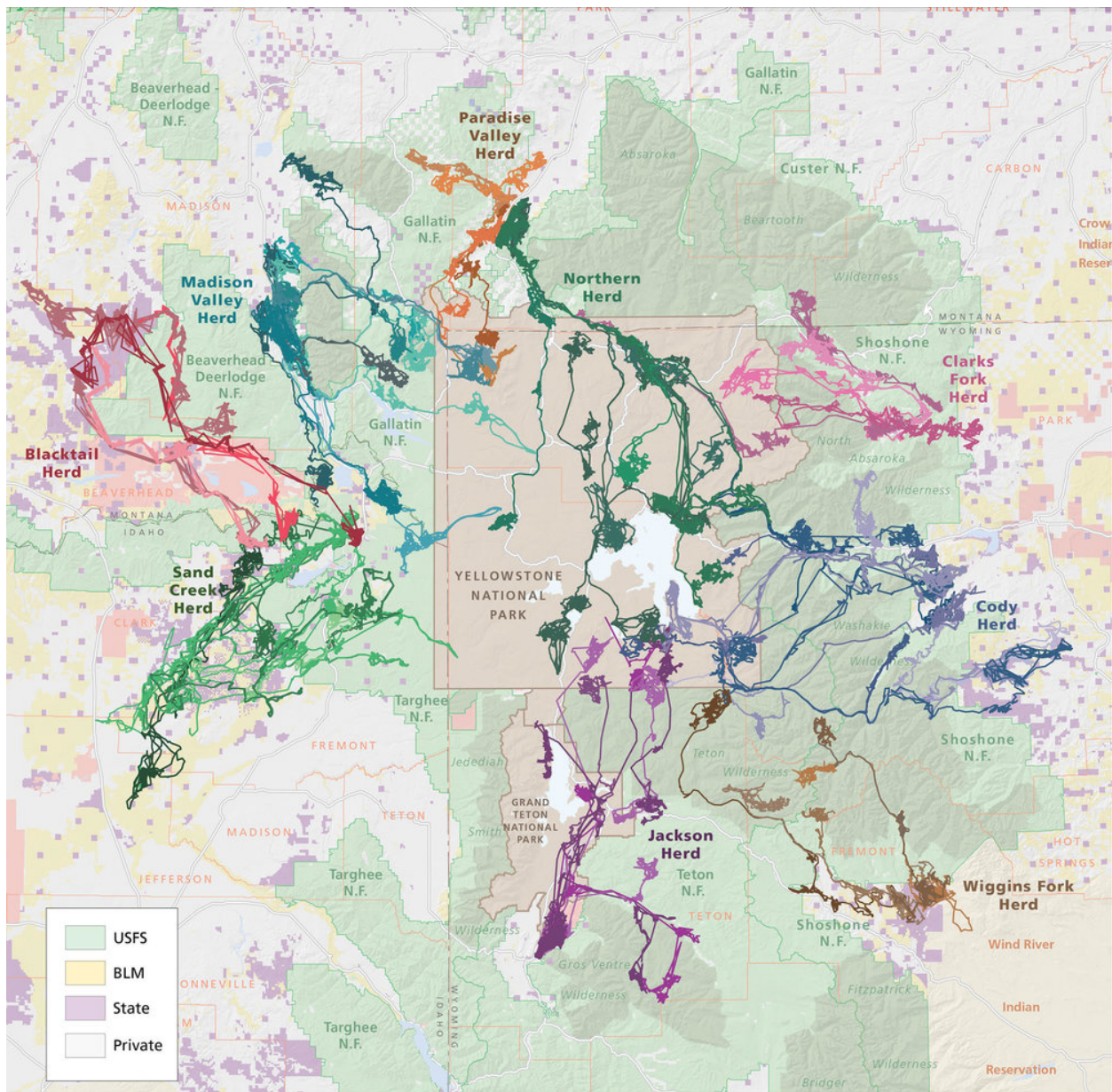
The area north of Henrys\_39 just across MT HWY 287 on the North is already a Wilderness area and this would just expand an already existing wilderness area as shown below. Henrys\_39 has been previously recommended as Wilderness since the 1987 Gallatin Forest plan.

There are also many elk migrations in the affected Henrys\_39 area as the picture shows below with the accompanying website.

Finally there is a 150 year fault line (the highest activity rating in Montana) just along the east of HWY 87 in the affected Henrys\_39 area (see the cited website and picture below. To make it more personal, I took a picture of the fault line that can visibly be seen on the bottom of the last picture below. The steepness of the Mountain also shows how little use it would be for recreational activities (though Elk can easily climb the mountain). I built my house near the HWY 87 not aware of the high earthquake rating.

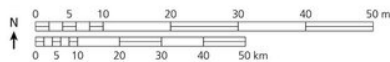
Recently mapped elk migrations covering hundreds of miles in Greater Yellowstone clearly demonstrate the importance of involving multiple agencies, landowners, and conservation interests. Wildlife migrating in and out of Yellowstone are the lifeblood of this ecosystem, and we believe their pathways should be protected.

"<https://static1.squarespace.com/static/54919e5ae4b057e73fb9016d/t/5a7de807419202e759182905/1518200848157/elk+migrations+map+-+wmi.jpg>" alt="elk migrations map - wmi.jpg"



## Elk Migrations of the Greater Yellowstone Ecosystem

- Blacktail Herd
- Clarks Fork Herd
- Cody Herd
- Jackson Herd
- Madison Valley Herd
- Northern Herd
- Paradise Valley Herd
- Sand Creek Herd
- Targhee Herd
- Wiggins Fork Herd



September 18, 2015 DRAFT



© 2015 University of Wyoming  
 Source: Atlas of Wildlife Migration: Wyoming's Ungulates (in production)  
 Cartography: University of Oregon InfoGraphics Lab  
 Elk data contributed by: Wyoming Game and Fish Department, Montana Fish, Wildlife, and Parks; Idaho Fish and Game, National Park Service, US Fish and Wildlife Service, Wildlife Conservation Society, Wyoming Cooperative Fish and Wildlife Research Unit, Iowa State University, and Yale School of Forestry and Environmental Studies

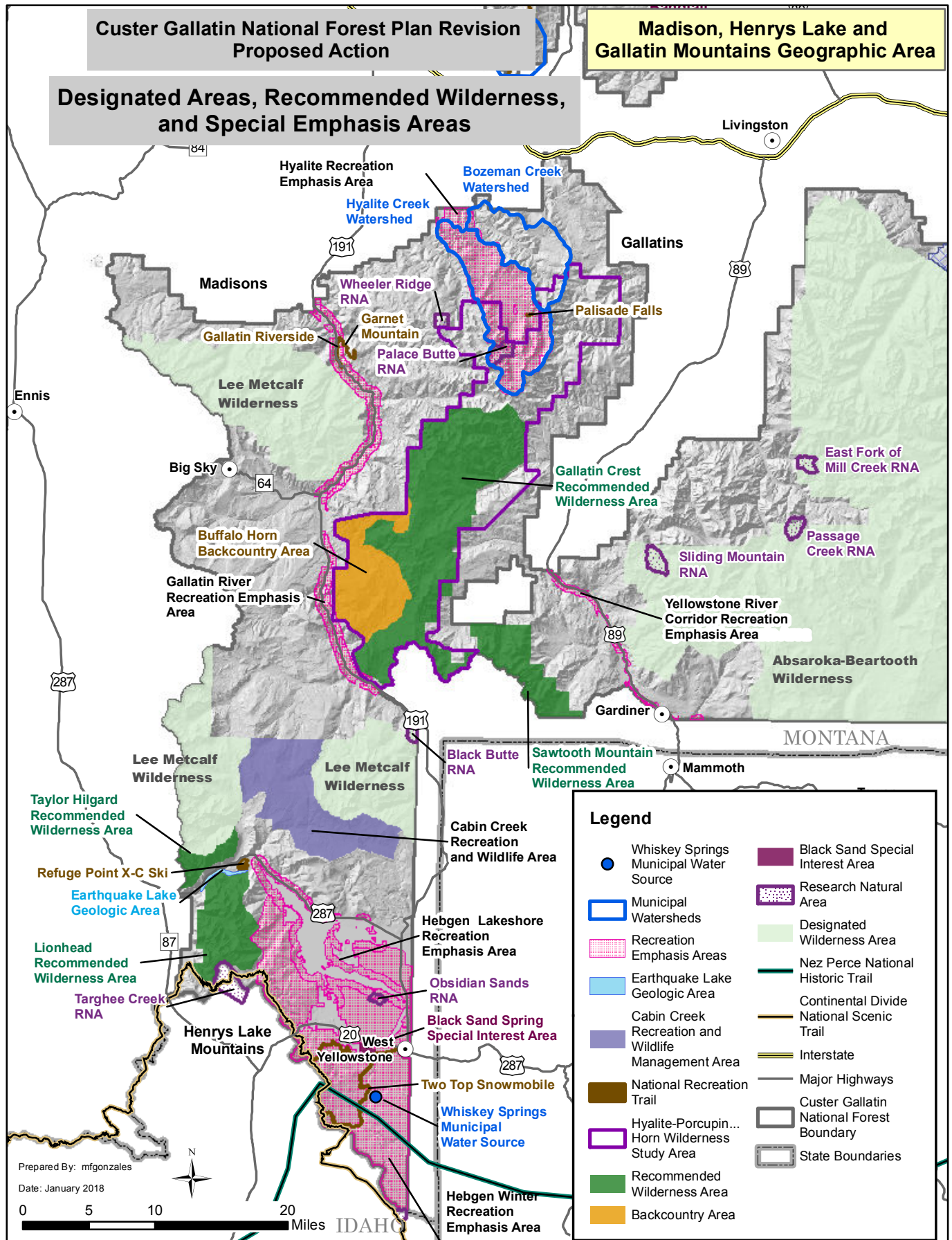
“When I look at the map [of elk migration], I feel I can see Yellowstone’s beating heart. The routes are the veins and arteries, and the animals the blood.

— Arthur Middleton, wildlife biologist

# Custer Gallatin National Forest Plan Revision Proposed Action

## Madison, Henrys Lake and Gallatin Mountains Geographic Area

### Designated Areas, Recommended Wilderness, and Special Emphasis Areas



Fault lines can be found at the Gov web page:  
<https://earthquake.usgs.gov/hazards/qfaults/map/#qfaults>

